

Simple Wrap

Easy Knitting

MEASUREMENTS

		S	M	L	XL
To Fit Bust	cm	75-80	85-90	95-100	105-110
Actual Size (edge to edge, approx)	cm	115	125	135	145
Length (approx at centre back)	cm	65	66	67	68

CLECKHEATON LAWSON TWEED 12 PLY 50g balls

Quantity (7822 Silver Fox)	9	10	11	12
----------------------------	---	----	----	----

Use only the yarn specified. Other yarns are likely to produce different results.

Quantities are approximate as they can vary between knitters.

Check the ball bands to ensure all yarn is from the same dye lot.

NEEDLES AND EXTRAS

- 1 pair 5.5mm (UK 5) knitting needles or size needed to give correct tension.
- cable needle.
- wool needle for sewing seams.

TENSION

This wrap has been designed at a tension of 16.5 sts and 22 rows to 10cm over stocking st, using 5.5mm needles.

To work a tension square, using 5.5mm needles, cast on 24 sts.

Work 34 rows stocking st. Cast off loosely.

Check your tension carefully.

If less sts to 10cm use smaller needles, if more sts use larger needles.

NOTE – This wrap is worked on larger needles and at a looser tension than usually recommended for this yarn.

SPECIAL ABBREVIATION

C8F = Slip next 4 sts onto cable needle and leave at front of work, K4, then K4 from cable needle.

TIP

For abbreviations and more information on knitting techniques, please see cleckheaton.com.au

BACK (WORKED SIDWAYS)

Using 5.5mm needles, cast on **104** (106-**108**-110) sts loosely.

Work **28** (30-**32**-36) rows stocking st.

BEG CENTRE PANEL PATT –

1st row – Purl.

2nd row – Knit.

Rep last 2 rows twice.

7th row – Knit.

8th row – Purl.

Rep last 2 rows once.

Last 10 rows form patt.

Work a further 26 rows patt.

Work **28** (30-**32**-36) rows stocking st, beg with a knit row.

Cast off loosely.



FRONTS (WORKED SIDeways, MAKE 2 ALIKE)

Using 5.5mm needles, cast on **104** (106-**108**-110) sts loosely.

Work 7 rows garter st, first row is wrong side (front band).

Work in stocking st (beg with a knit row) until Front measures **39** (43-**47**-50) cm from beg, ending with a purl row.

Cast off loosely.

COLLAR

Using 5.5mm needles, cast on 34 sts.

BEG PATT –

Work rows 1 to 12 incl from Collar Graph or written instructions as folls –

1st row – K3, (P2, K2) 4 times, P3, K8, P4.

2nd row – K4, P8, K3, (P2, K2) 4 times, P3.

Rep last 2 rows twice.

7th row – P3, (K2, P2) 4 times, P3, **C8F**, P4.

8th row – K4, P8, K3, (K2, P2) 4 times, K3.

9th row – P3, (K2, P2) 4 times, P3, K8, P4.

10th row – As 8th row.

Rep last 2 rows once.

Last 12 rows form patt.

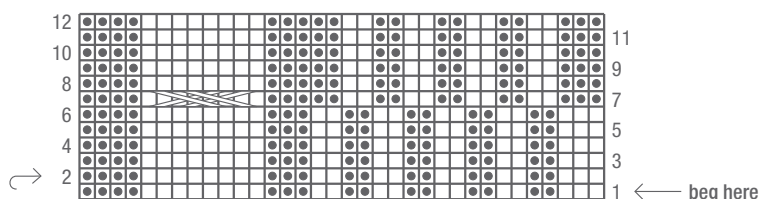
Cont in patt until Collar measures approx **114** (124-**134**-144) cm from beg, ending with a 12th patt row.

Cast off loosely in patt.

TO MAKE UP

NOTE – We recommend using mattress stitch to sew up your wrap. **DO NOT PRESS.** Using assembly diagram as a guide, join side and shoulder seams of Back and Fronts, leaving an opening of **22** (23-**24**-25) cm each side for armholes. Using a flat seam, join wrong side of collar to right side of Back and Fronts, with cable at outer edge, easing where necessary. Fold collar to right side.


COLLAR GRAPH



KEY

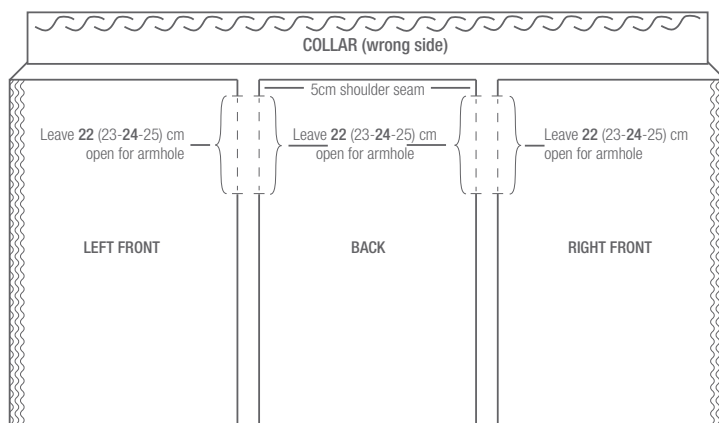
□ = Knit st on right side, purl st on wrong side.

● = Purl st on right side, knit st on wrong side.

 = **C8F** - Slip next 4 sts onto cable needle and leave at front of work, K4, then K4 from cable needle.

NOTE - When working from Graph, read odd-numbered rows (right side rows) from right to left and even-numbered rows (wrong side rows) from left to right.

ASSEMBLY DIAGRAM



CONTACT US

Level 7, 409 St Kilda Road, Melbourne, VIC 3004
A.B.N 85 055 366 590

T +61 3 9380 3888 F +61 3 9820 0989

cleckheaton.com.au

 /auspinners

 @auspinners

HELPLINE

For Australian residents – If you are using the recommended yarn and need help with your pattern, please phone 03 9380 3888 or Toll Free 1800 337 032 (9am to 4pm Mon to Fri E.S.T.).

If you live outside Australia, please see our postal address and website details.

*Stuck?
We're here
to help!*

We have made every effort to ensure that these instructions are accurate and complete. We cannot be responsible for variations in individual work, human error or if yarn other than the recommended Cleckheaton yarn is used. This publication is protected by copyright. Cleckheaton Lawson Tweed 12 ply is a trade mark of Australian Country Spinners Pty Ltd. Yarn colours shown may vary slightly due to the printing process and different monitor settings.